



Instructions of electric honeycomb paper machine

MODEL: HP50-D2

VERSION: 202106

www.AirPackagingMachine.com

CONTENTS

SAFETY PRECAUTIONS	2
BASIC PARAMETERS OF EQUIPMENT	2
STRUCTURE INTRODUCTIONS	3
KEY OPERATION INSTRUCTIONS	4
INSTALL INSTRUCTIONS	5
INSTRUCTIONS FOR USE	5

SAFETY PRECAUTIONS

Please use 100-230V power supply.

Avoid placing in direct sunlight and outdoors.

Please cut off the power quickly when break down.

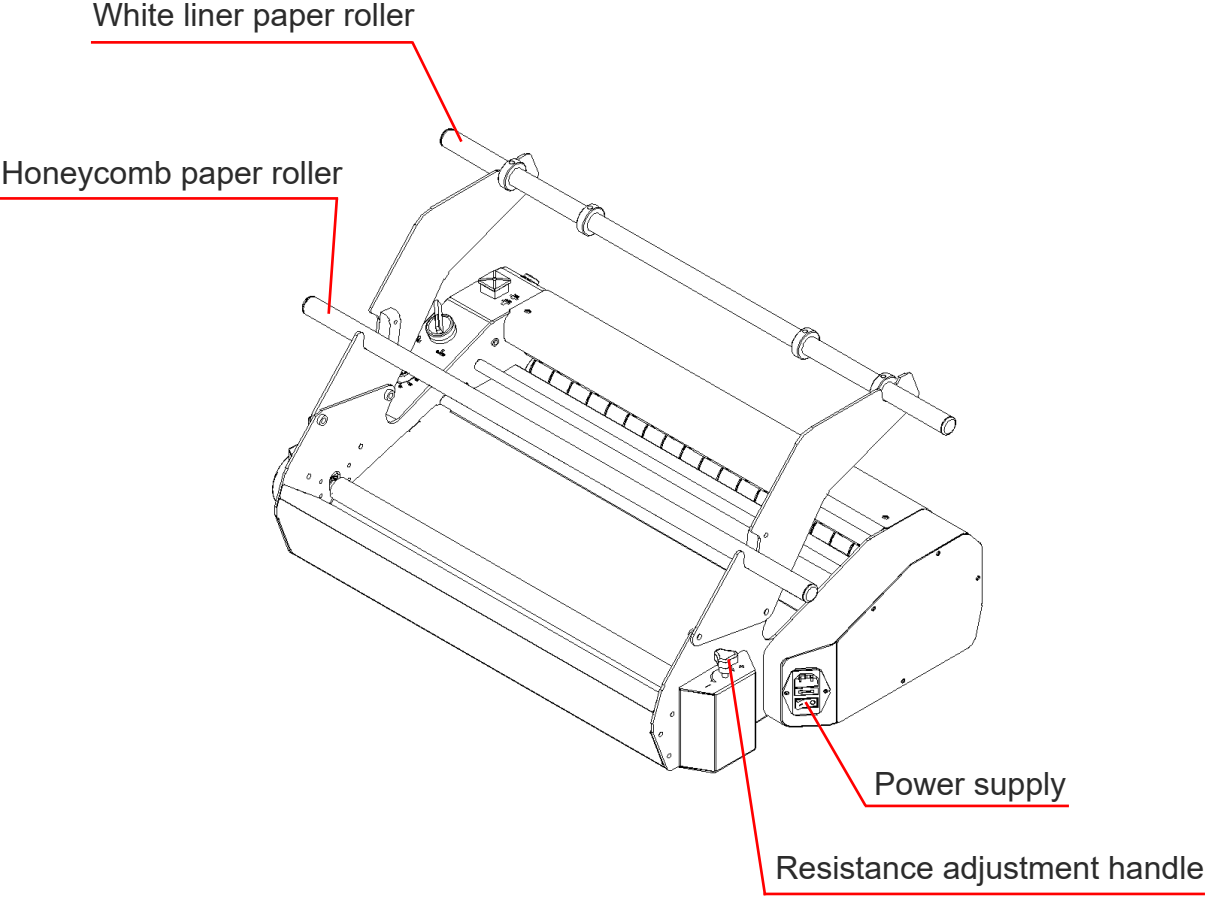
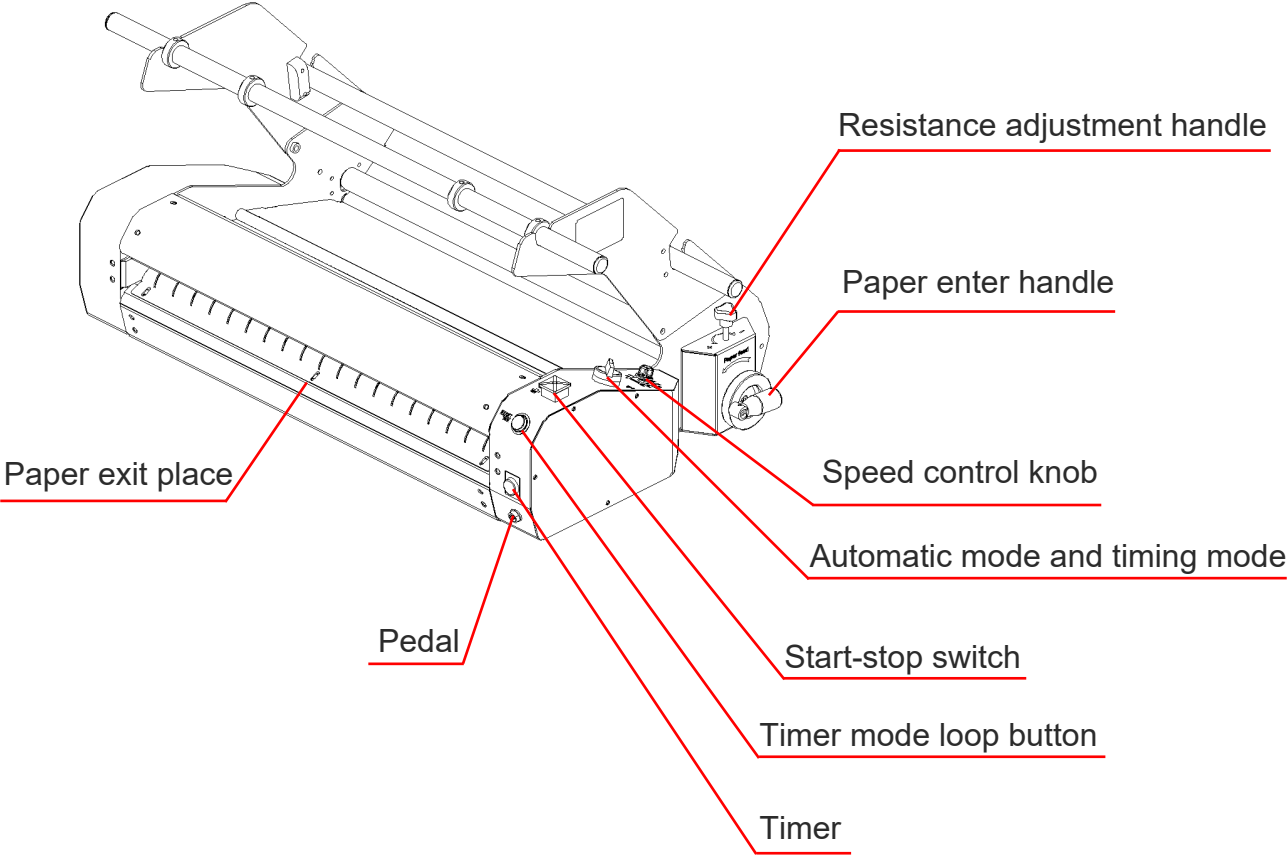
Please disconnect the power supply and remove the plug , when cleaning or repairing equipment.

Do not disassemble or repair equipment without the knowledge of engineer.

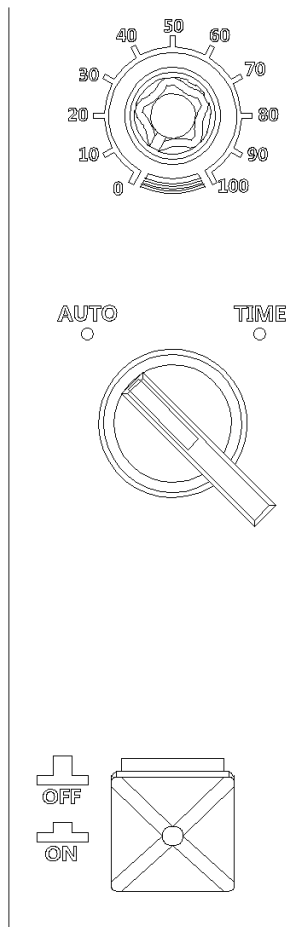
BASIC PARAMETERS OF EQUIPMENT

Voltage	Power	Speed	Weight	Size
100-230V 50/60HZ	40W	35CM/S	23KG	73*42*35CM

STRUCTURE INTRODUCTIONS



KEY OPERATION INSTRUCTIONS



SPEED CONTROL KNOB

Adjust the paper output speed.

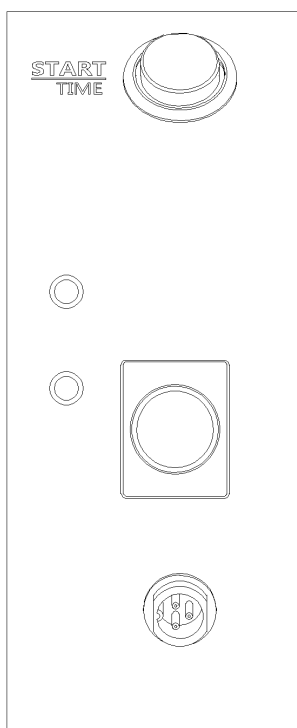
AUTOMATIC MODE AND TIMING MODE

Automatic mode: continuous output mode. Press the square button to start continuous output, and then press again to pause.

Timing mode: the paper will output during the setting time.

START-STOP SWITCH

The switch which is control start and stop of automatic mode and timing mode.



TIMER MODE LOOP BUTTON

When the set time is stopped, it can be activated again to cycle.

TIMER

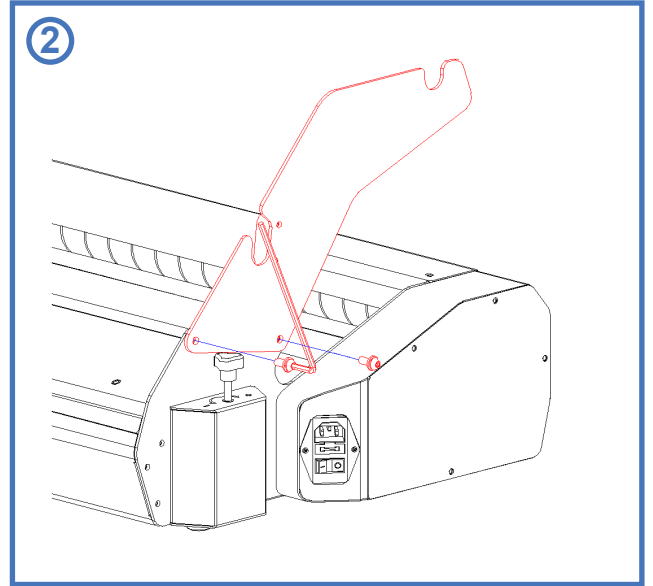
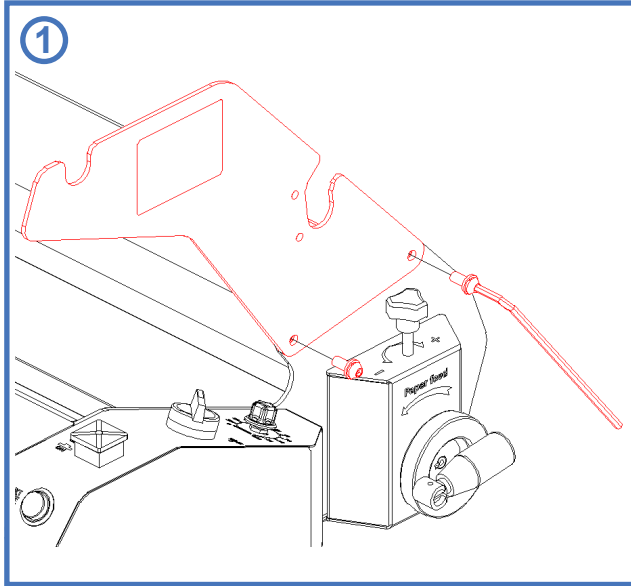
Set the paper output time between 0-30s.

PEDAL

Slightly step on the pedal to output the paper, release pedal to stop paper output.

INSTALL INSTRUCTIONS

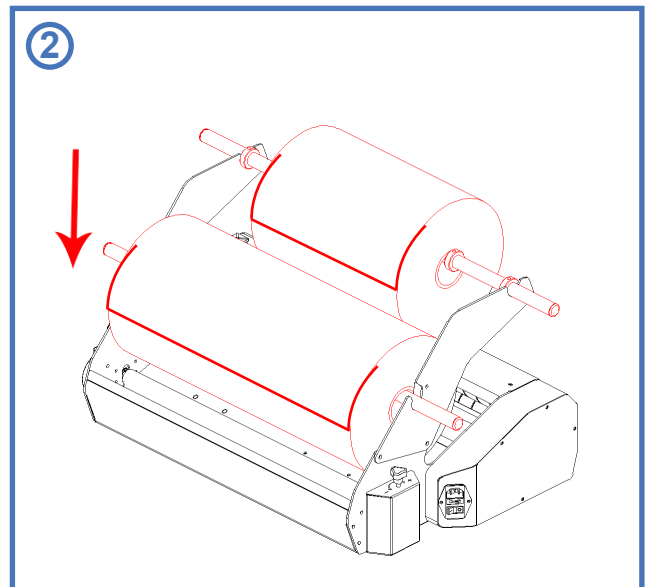
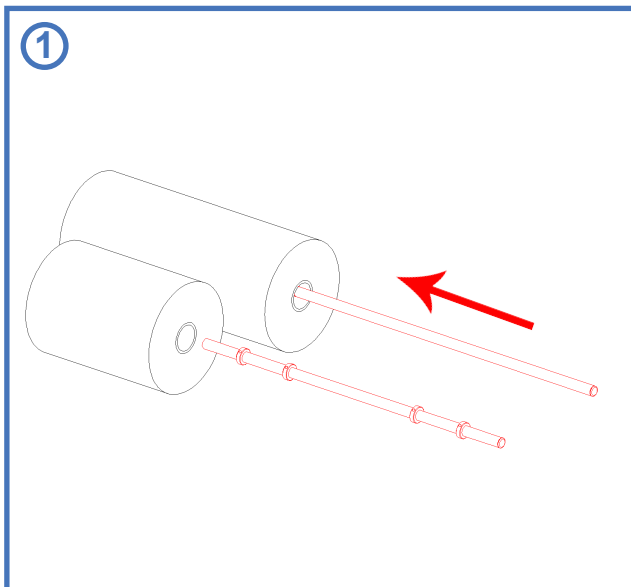
Take out the whole machine and install the support plate (pay attention to distinguish the left and right directions).



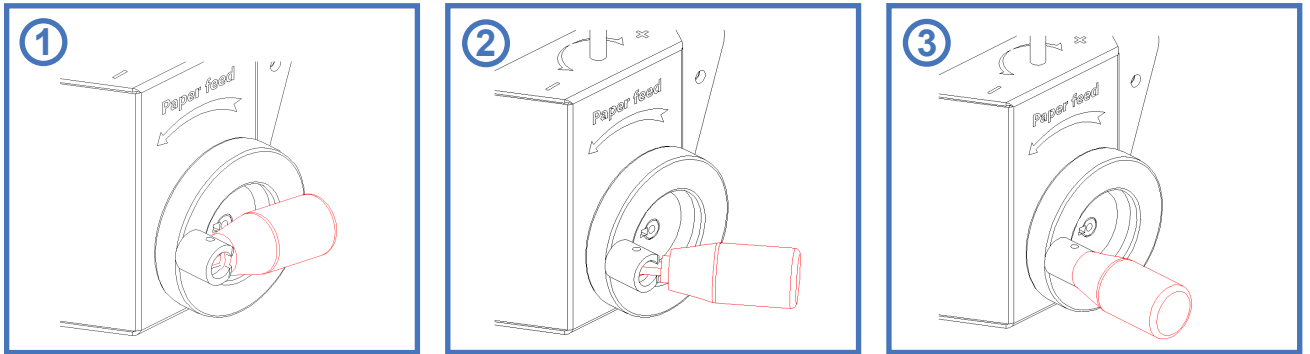
INSTRUCTIONS FOR USE

As shown in Figure 1, insert the paper roller (note the direction of the honeycomb paper).

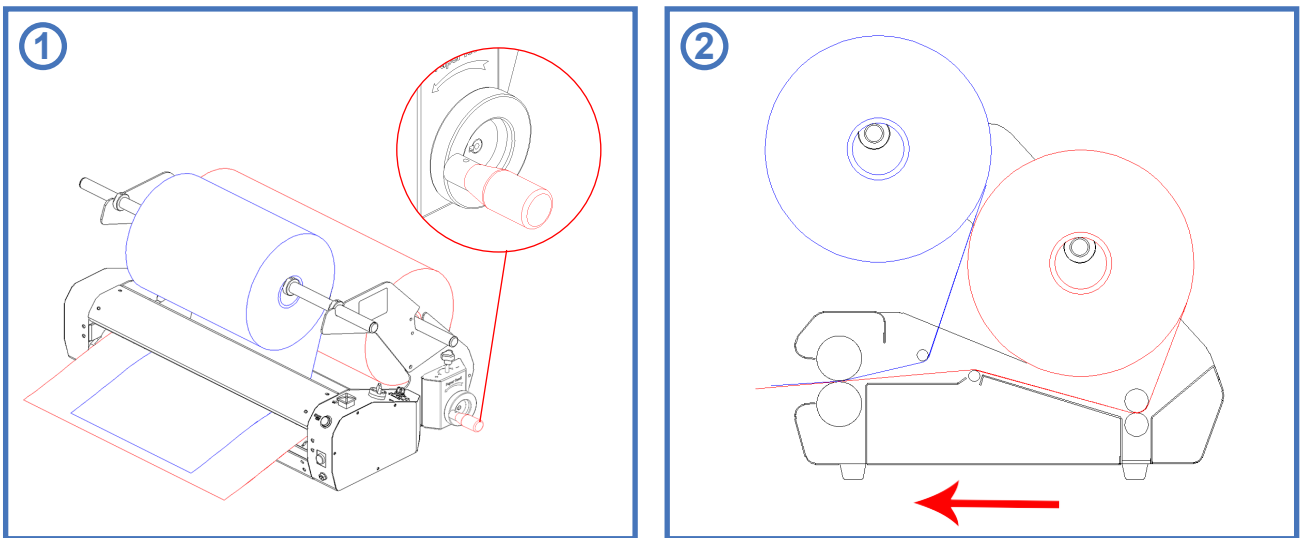
As shown in Figure 2, put on the paper (pay attention to the direction of the honeycomb paper, honeycomb paper need put in front of white lining paper).



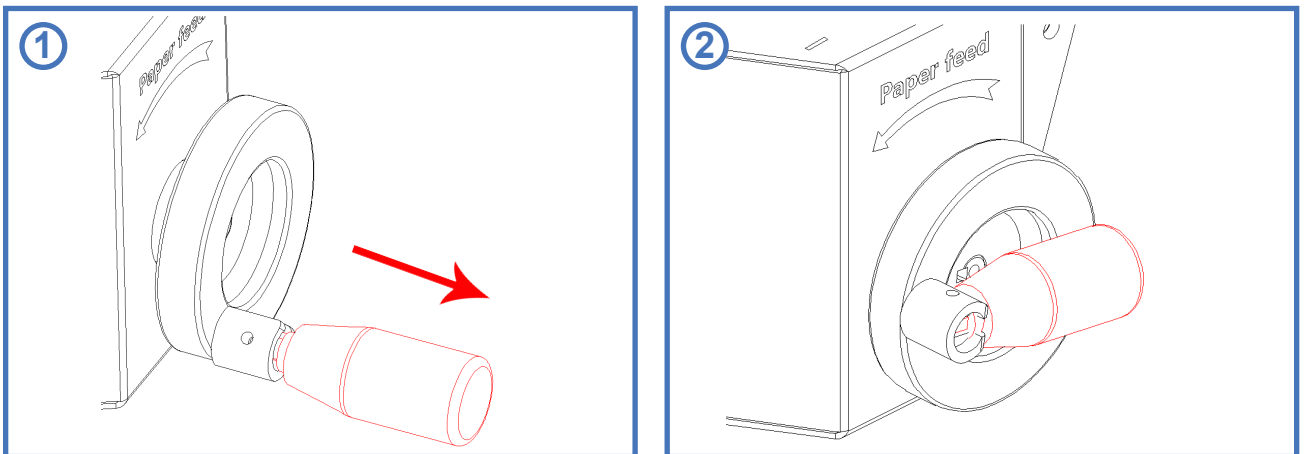
Open the paper enter handle



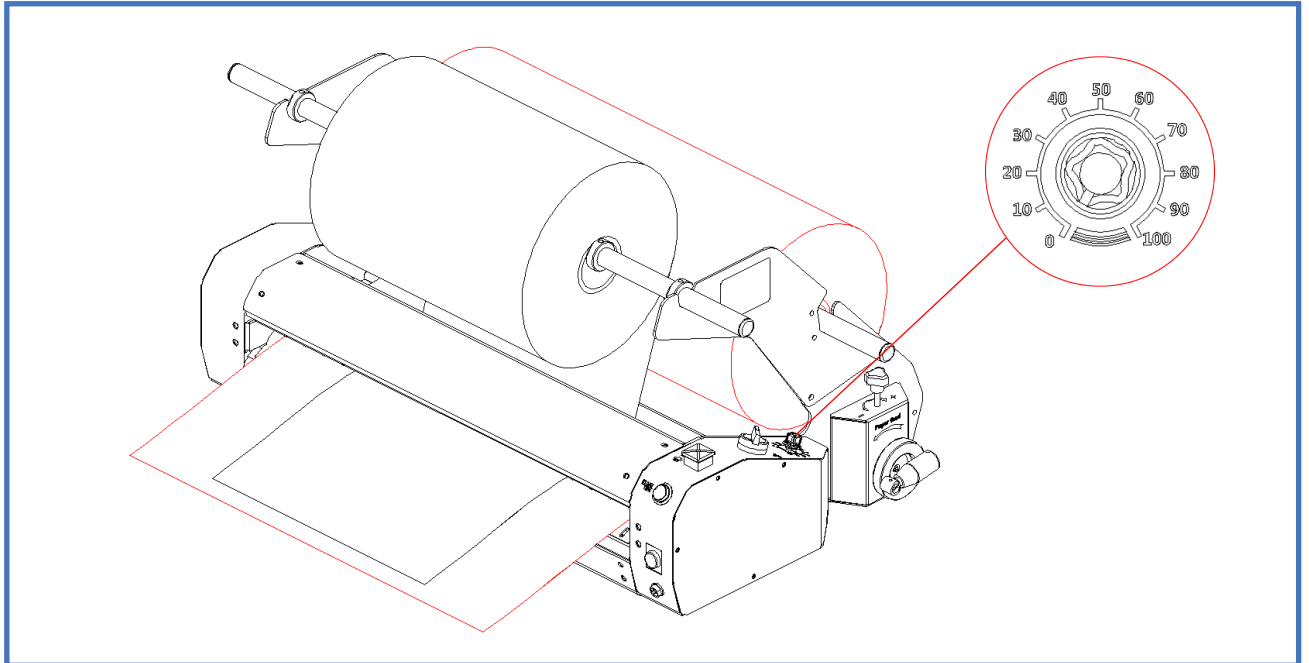
Turn the paper enter handle counterclockwise to make the honeycomb paper pass through the device.



Pull the handle outwards, and fold the handle inward.



Press the start-stop switch, select automatic mode, fine-tune the speed adjustment knob to make the honeycomb paper come out of the paper outlet, and then pull out a section of the white liner paper and place it on the honeycomb paper so that the white liner paper comes out of the paper outlet channel.



When the honeycomb paper does not stretch out shape of honeycomb holes, the adjustment handles on both sides can be adjusted at the same time to increase the resistance and adjust to a suitable state.

